



Minutes of a meeting of the HB Civil Defence Emergency Management Group Joint Committee

Date: Monday 27 January 2025

Time: 1.30pm

Venue: Council Chamber
Wairoa District Council
97-103 Queen Street
Wairoa

Present: H Ormsby, Chair
Mayor A Walker, Deputy
Mayor S Hazlehurst – HDC
Mayor C Little – WDC
Mayor K Wise – NCC

**Advisory members
in attendance** B Barber – Ngati Kahungunu Iwi Inc (*online*)
J Hamilton – Specialist Advisor
L Symes – Tātau Tātau o te Wairoa
I Wilson – National Emergency Management Agency (NEMA)

In Attendance: N Peet – HBRC Chief Executive
D Tate – CHBDC Chief Executive
S Briggs – Acting Group Controller / Manager
M Boggs – Director of HB CDEM Transformation
N Bickle – HDC Chief Executive
G Varcoe – FENZ Regional Commander
R McLeod – CE HB Regional Recovery Agency (*online from 1:37pm*)
D Gawn – NEMA Chief Executive
R Hollyman – Governance Advisor
K Tipuna – WDC Chief Executive
J Savage – WDC Local Controller
D Elers – CHBDC Group Manager – Community Partnerships (*online*)

1. Welcome/Karakia /Apologies

The Chair welcomed everyone to the meeting and opened with a karakia.

2. Conflict of interest declarations

There were no conflicts of interest declared.

3. Confirmation of Minutes of the HB Civil Defence Emergency Management Group Joint Committee held on 25 November 2024

CDE6/25

Resolution

Minutes of the HB Civil Defence Emergency Management Group Joint Committee held on Monday, 25 November 2024, a copy having been circulated prior to the meeting, were taken as read and confirmed as a true and correct record.

**Hazlehurst/Walker
CARRIED**

4. HB CDEM Transformation Programme update

The Chair, Hinewai Ormsby, introduced Matt Boggs who spoke to the item. Discussions noted:

- The Strategy puts community at the heart of emergency management for HB and will be operationalised by the Coordinating Executives Group (CEG)
- The details of roles and role responsibilities in the local and regional CDEM structure are still being finalised. Hawke's Bay needs both local and regional emergency management delivered by accredited, professional workforce.
- About 95% of Hawke's Bay people live where the hazards are – rivers, roads, and bridges – with one road in and out.
- Significant investment is required, in the 7 areas of Māori partnerships, community connections, infrastructure and assets, training and exercising, performance and assurance, planning, and service level agreements.
- Findings from the Cyclone Gabrielle enquiries are woven in at a high level and aligned to NEMA and central government direction of the Emergency Management System Improvement Programme (EMSIP).
- Lifelines and emergency services agencies provide visibility of their activities via their membership on the Coordinating Executives Group (CEG) and updates to those meetings.
- Mana whenua engagement is ongoing, including at governance, organisational and community levels.
- The aim is to get the systems we need, not just the ones we can afford.
- The 'group' and 'council' roles and responsibilities need to be clearly defined.
- A more detailed operational dashboard (for CEG) will include financials.

CDE7/25

Resolutions

That the Hawke's Bay CDEM Group Joint Committee:

1. Receives and notes the *HB CDEM Transformation Programme update* staff report and HB CDEM Transformation dashboard.
2. Approves the HB CDEM Transformation Strategy as proposed, for implementation by the Hawke's Bay Civil Defence Emergency Management Group.

**Hazlehurst/Walker
CARRIED**

7. National Emergency Management Agency update

The Chair introduced Dave Gawn, NEMA CE, who provided an update that covered:

- Applaud transformation strategy work which aligns with direction of central government. It is important that regions are self-reliant.
- Emergency management is under-resourced across the entire country.
- The Emergency Management System Improvement Programme (EMSIP) will provide a plan to uplift emergency management and improve the system across the board, with the key element being that community is at the heart.
- NEMA reviews looked at 28 of the 82 reviews of the North Island severe weather events.
- There is no Common Operating Picture (COP) at a national level. NEMA is developing a business case for rolling this out, for as little as central Government can afford. There are inequities within some regions regarding affordability; often the communities most at risk.
- A new National Emergency Management Facility is under construction and an investigation into an alternative facility in Auckland. A workforce of 600 will be required to manage the continuation of government in Auckland should an event like Hikurangi affect Wellington.
- The Emergency Management Assistance Team is to be rebranded as Regional Support Teams, who will provide a 24/7 immediate capability across higher functional levels in an advanced specialist space to support regions as and when they are required.
- National Assurance Capability has just brought on Stefan Michie (who starts next week) and will provide support and assurance to Government and the regions nationally.
- The recovery stream needs to be brought into the transformation strategy as this area is weak across the country.
- The Plan and Investment roadmap is due in Cabinet by early April 2025, aligned with the Emergency Management Bill, with the intent to deliver the Bill by September 2025. There will be opportunity for targeted engagement.
- NEMA is working on the National Space Weather Response Plan and has developed and published the first plan for Hikurangi, alpine fault or space weather events.
- In terms of emergency management training, SIMS courses need to be better aligned.

Dave Gawn the left meeting at 2.48pm

CDE8/25

Resolution

That the HB CDEM Coordinating Executive Group receives and notes the *National Emergency Management Agency update*.

**Wise/Little
CARRIED**

5. HB CDEM Group Controller appointments

Shane Briggs introduced the item and discussions covered:

- Need to have at least 3 group controllers (preferably 4) for HB.
- Once a controller is appointed they have the power to act whether they are trained or not, and can work under the supervision of another controller.
- HB funds 2 Response & Recovery Aotearoa NZ) (RRANZ) Controller Development programmes per year, run twice per year in Auckland and Christchurch. The programme is beneficial but doesn't give you all the tools required. Once appointed, controllers are required to attend regional Controller meetings, lead exercises annually, participate in training and development and undergo 360-degree feedback every three years.

CDE9/25

Resolutions

That the Hawke's Bay Civil Defence Emergency Management Group Joint Committee:

1. Receives and considers the *HB CDEM Group Controller appointments* staff report.
2. Endorses the outlined Controller selection process, with the understanding that it will be

further developed into a formal policy.

- Notes that feedback on the outcome of the process will be provided to the Joint Committee after its initial implementation.

**Walker/Wise
CARRIED**

6. Local Controller removal

Shane Briggs introduced the item, which was taken as read.

CDE10/25 Resolutions

That the Hawke's Bay Civil Defence Emergency Management Group Joint Committee:

- Receives and considers the *Local Controller Appointments* staff report.
- Agrees to the removal of Michael Hardie as a Local Controller for the Hawke's Bay CDEM Group.
- Agrees to amend *Appendix 5: Key Appointments* of the Hawke's Bay CDEM Group Plan pursuant to section 57 of the Civil Defence Emergency Management Act 2002 to remove Michael Hardie as a Local Controller.

**Walker/Little
CARRIED**

8. Collective achievements post Cyclone Gabrielle

Shane Briggs introduced the item and staff representatives of each of the councils presented slides (attached) outlining details of their achievements. Due to time constraints the slides from the HB Regional Recovery Agency and Emergency Services (NZ Police, FENZ, Hato Hone St John) were not discussed.

CDE11/25 Resolution

That the HB CDEM Group Joint Committee receives and notes the *Collective achievements post Cyclone Gabrielle* report and presentation.

**Little/Walker
CARRIED**

9. Confirmation of 25 November 2024 Public Excluded Minutes

CDE12/25 Resolutions

That Hawke's Bay Regional Council excludes the public from this section of the meeting being Confirmation of Public Excluded Minutes Agenda Item 8 with the general subject of the item to be considered while the public is excluded. The reasons for passing the resolution and the specific grounds under Section 48 (1) of the Local Government Official Information and Meetings Act 1987 for the passing of this resolution are:

General subject of the item to be considered	Reason for passing this resolution	Grounds under section 48(1) for the passing of the resolution
Confirmation of 25 November 2024 Public Excluded Minutes	In considering the candidates for Controller the names, experience and qualifications will be made available which, if made public would breach the	s7(2)(a) Excluding the public is necessary to protect the privacy of natural persons. s7(2)(f)(ii) Excluding the public is necessary to maintain the effective conduct of public affairs by protecting councillors and/or council employees and contractors/

privacy of the individuals
concerned.

consultants from improper pressure or
harassment.

**Walker/Hazlehurst
CARRIED**

9. Confirmation of 25 November 2024 Public Excluded Minutes

CDE13/25 Public excluded minutes of the HB Civil Defence Emergency Management Group Joint Committee meeting held on 25 November 2024, a copy having been circulated prior to the meeting, were taken as read and confirmed as a true and correct record.

**Walker/Wise
CARRIED**

Resolution

CDE14/25 That the meeting moves out of Public Excluded session.

**Little/Hazlehurst
CARRIED**

The meeting went into public excluded session at 3.48pm and out of public excluded session at 3.49pm

Closure:

There being no further business the Chair declared the meeting closed at 3.50pm on Monday 27 January 2025.

Signed as a true and correct record.

Date: 24 March 2025

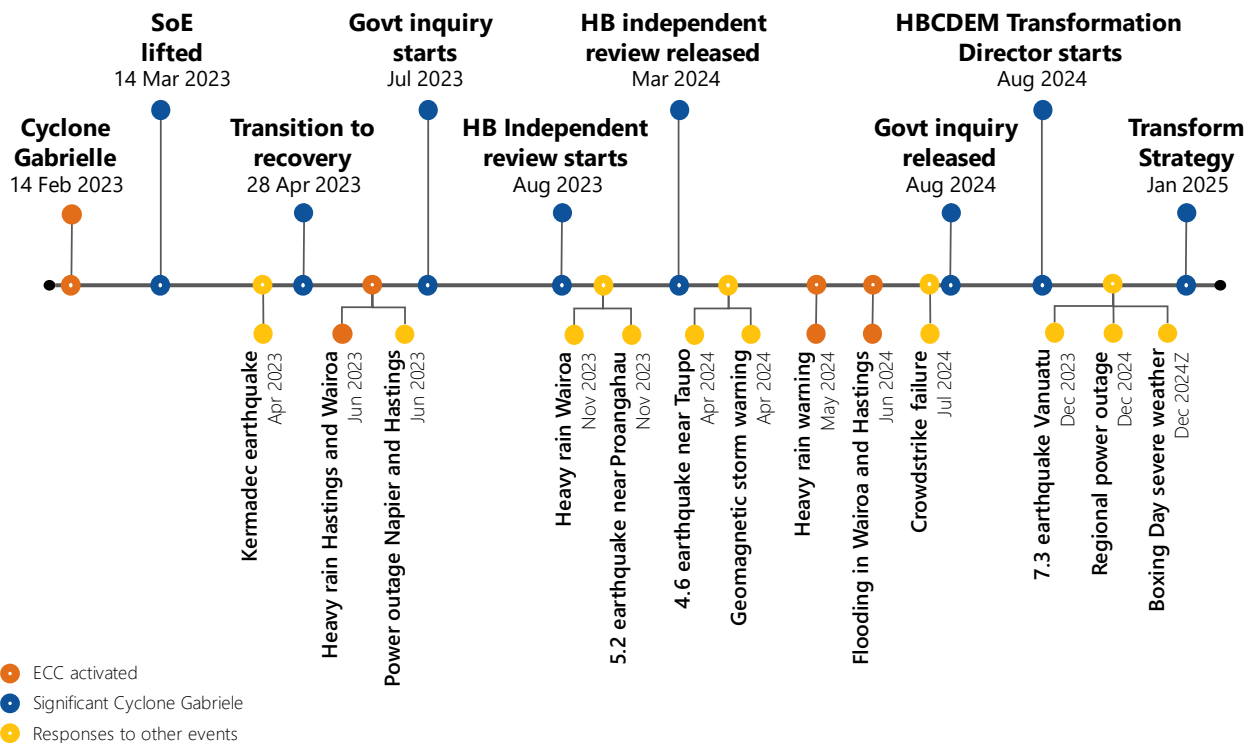
Chair: Hinewai Ormsby

Achievements post-Cyclone Gabrielle

Hawke's Bay Emergency Management Office



Response



Readiness



- **27** Community Emergency Hubs established.
- **65** Hubs in progress.



- **6** Community Response Plans completed
- **20** plans in development.



- **8** Iwi/marae engaged with (Wairoa, Hastings and Central Hawke's Bay).



- **20** CDEM-managed volunteers recruited.
- **41** courses delivered to CDEM volunteers.



Working with sectors to support and develop resources:

- Disability
- Multicultural communities
- Early childhood centres and schools
- Older persons network
- Private sector
- Lifestyle block owners.



- **4** Hikurangi roadshows
- ShakeOut and Tsunami hiko week campaigns.



New blue tsunami evacuation zones.

Readiness



710 coordination centre staff, CDEM volunteers, and partner agency representatives completed initial emergency management training.



4 Local Controllers trained and **5** undergoing training.



Developed a welfare registration and needs assessment tool with Taranaki CDEM.



14 key sites approved for government-funded solar panels.



Plans being completed:

- Protocols for notifying emergency management office
- Regional Welfare Plan to inform local welfare plans
- Civil Defence Centre Guide
- Priority Routes.



- **8** Starlinks for emergencies
- Digital radio network used by community hubs.



120 ECC staff.
(▲ 75% post Cyclone)

WAIROA DISTRICT SINCE CYCLONE GABRIELLE



02

REDUCTION

01 FLOOD MITIGATION SCHEME

- A Crown Manager has been appointed to lead the \$70 million Flood Mitigation Scheme, funded by Central Government.
- Engagement with affected landowners is ongoing and includes the Māori Land Court and Te Tumu Paeroa in this process.
- A preferred flood mitigation solution and supporting business case to be confirmed and submitted to Central Government by 31 March 2025.



1948



2014



2017



02 WAIROA RIVER BAR OPERATIONAL MANAGEMENT

- HBRC has conducted a review of the Wairoa River Bar Operational Management Plan and invited WDC to participate in the review discussions.
- When monitoring weather watches/warnings occur, HBRC provides regular updates to key WDC departments i.e. the 3Waters team and local controller, through various channels including phone calls, texts, and emails.
- Recent heavy rain events have highlighted the value of HBRC's consistent updates, which have supported the local controller in decision-making.



READINESS

Wairoa District Council



OUR COMMUNITY

- Community Emergency Hubs (CEH)
22 total including 12 marae
- Community Resilience Plan's
5 total including, 3 complete, 2 in progress



CONNECTION WITH COMMUNITIES

- Isolated communities across the Wairoa district have been identified and incorporated into the program schedule, progressing from West to East.
- EPODs have been established at eight locations. Additional funding is being pursued to further advance the isolated communities project.
- A communication network update and review with Colvin's Communications is underway to assist with a communication plan and identify analogue and digital networks.



SECTOR ENGAGEMENT

- Disabled Communities: Kahungunu Executive (KE) Day Programme
- ECC and Schools: connected for public education/awareness
- Social Services: KE, Age concern, Enabled Wairoa, Te Whare Maire o Tapuae
- Rural and lifestyle block owners: Federated Farms, Rural Support Group, Māori farm owners, East Coast Expo



WORKFORCE CAPABILITY

- 33 assigned coordination centre staff.
- Key emergency appointments:
 - Local controller - Juanita Savage
 - Alternate controller - Te Aroha Cook
 - Emergency Management Advisor - Lenny Ferris
 - Another alternate controller is due to be tabled at the Joint Committee.
- A review will assess duty and on-call capabilities, currently managed solely by the local controller on a 24/7 basis.



PUBLIC EDUCATION CAMPAIGNS

- Shake out campaigns with schools and businesses
- Social Media messaging for preparedness, and when weather warnings are forecasted.
- Early Childhood Centre visits by the local EMA to review their evacuation plans.



PLANS AND PROCESSES

- Ongoing Internal Audit: A comprehensive review of plans, procedures, and strategies is currently underway to ensure effectiveness and alignment with objectives.
- Enhanced Manual Capability: A key focus is on strengthening manual operational capabilities.

Wairoa District Council



EQUIPMENT AND RESILIENCE

- Reviewing a common operating platform.
- ArcGIS is in place. Starlink units in place at locations identified to be a key area. I.e. main council building (current EOC base).
- Solar power panels installed at the Wairoa War Memorial Hall (Evacuation Centre on the south side of the town bridge).
- Regional Critical Fuel Plan - fuel management system for both sides of the river.
- Facilities that improve resilience, such as Civil Defence Centres, solar-powered critical infrastructure, contingency communications and identifying resource gaps.



PARTNERSHIPS AND COLLABORATION

- Establish and review Memorandums of Understanding (MOUs) and agreements.
- Build partnerships, including integration with mana whenua emergency management arrangements.

Wairoa District Council



RESPONSE

NOVEMBER 2023

- Impact of heavy rainfall overnight.
- FENZ assisted evacuations from Nuhaka properties and vehicles stranded on SH2 near Nuhaka.
- Mārae activated to receive 10 people.
- Extensive surface flooding closed some streets in Nuhaka and Karaka Street in Wairoa township.
- Some schools and early childcare centres chose to close.
- Flooding and slips closed Mangapoike, Mahia East Coast, Glenbrook, Waihua Valley, Tiniroto, Kinkini and Mahanga roads.
- Wairoa River levels monitored, was open and flowing freely.

MAY 2024

- Orange Heavy Rain warning issued by MetService being monitored.



JUNE 2024

- River flood water impacted people and properties in Kopu Road and surrounding streets in Wairoa township. The situation presented was high sea swell, rainfall volume and closed Wairoa River mouth.
- Wairoa declared a local State of Emergency Wed 26 June 2024 at 0637.
- 420 properties including dwellings, ancillary/outbuildings, and associated infrastructure such as boundary/internal fencing, and roading/access remain affected.
- 100 households were evacuated. Displaced families from affected dwellings require ongoing accommodation support and planning for long-term housing needs.
- Local Notice of Transition from Response to Recovery became effective 0637 on Wed 3 July 2024.

RECOVERY



HOUSING AND BUSINESS REPAIRS

- Rebuild of Cyclone Gabrielle flood impacted homes progress with support from the Church of Jesus Christ of Latter-Day Saints, and Te Puni Kokiri through Tātau Tātau o Te Wairoa.
- Wairoa has 190 yellow stickered homes remaining from both Cyclone Gabrielle and the June 26 flood event. At the peak 274 homes were yellow stickered.
- Subsidised underfloor insulation for 44 homes that were impacted by the June 26 flood underway.
- Commercial business
 - 46 yellow sticker total at peak - now 33
 - 74 white sticker total at peak - now 35

Wairoa District Council



RECOVERY SUPPORT

- Silt and Debris fund extended to allow for clean up to continue.
- Pataka Service, used for the distribution of supplies, closed prior to Christmas 2024.
- The Wairoa Mayoral Relief Fund has distributed around \$400,000 to people impacted by the June flooding event.
- Temporary Accommodation Services (TAS) supplied accommodation for 13 households from Cyclone Gabrielle and 24 households during the June event, with these numbers reducing.
- Silt Recovery Taskforce recovery work completed. Around 209,000 cubic metres of woody debris recovered along the coast between Māhia and Napier.

WAIROA'S FUTURE

Empowering our communities,
preparing for and managing emergencies



Photo credit: RNZ/Jimmy Edingham

Presented by Juanita Savage

CDEM Readiness Improvements Achieved in 2023/2024

27 January 2025

REDUCTION

HDC & NCC CATEGORY 3 VOLUNTARY BUY-OUT POU

Enabling people to move away from high hazard areas (at 22 Nov 2024):

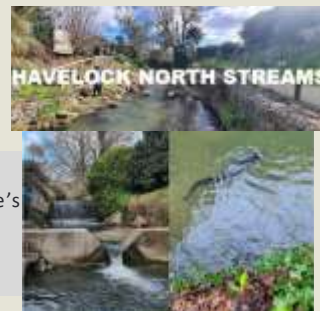
- **86%** of property owners have **approved** the offer and **79%** have **settled**.
- Only **3** offers **remain** to be made to eligible owners.
- **98%** of Category 3 property owners actively **engaged**
- **95%** of eligible property owners **received** an offer.
- Expenditure: HDC 45.4M (Cap \$50M), NCC \$4.1M (Cap \$5M)
- Demolition is complete (or not needed) for 71% of properties.
NOTE: Demolition waste is being diverted and repurposed as much as possible.

HDC PLAN CHANGE 6

District Plan Change 6 provides Category 3 property owners an easier subdivision pathway to create replacement property as quickly as possible.

HAVELOCK NORTH STREAMS AND DAMS PROGRAMME

- Dam survey completed and proactive maintenance of the streams with Hawke's Bay Regional Council Works Group.
- Emergency Action Plan including community alerting undedevelopment.



READINESS - COMMUNITY RESILIENCE

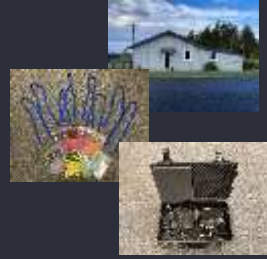
- **Community led resilience pathway**
 - 48 community meetings over 12 months.
 - Marae hubs kōrero & TTOH collaboration.
- **7 Community Resilience Plans:**
 - 3 Completed.
 - 4 In progress.
- **43 Community Emergency Hubs:**
 - 8 Operational.
 - 35 In progress.



- **GIS Hub Dashboard**
 - Summarise Hub status
 - Support engagement & auditing.
 - Realtime status in an event

Funding Providers	Amount	Purpose
Ministry for Primary Industry	\$1,370,000	Support rural hubs
Red Cross	\$1,253,000	13 Pasifika & Rural hubs
Department of Internal Affairs	\$854,100	Community Connectors
Ministry of Social Development	\$50,500	Community wellbeing & Hauora Grants
Red Cross	\$303,600	Civil Defence Centre supplies
Total	\$3,831,200	

- **This funding has enabled:**
 - Rural hall upgrades for weathertightness, power, water.
 - Containers and equipment.
 - Digital VHF radios.
 - CD Wheelie Bins.
 - Hub signage, stationary kits, Role cards, Logbooks.



HERETAUNGA HASTINGS

READINESS – HDC CAPABILITY

- **People**
 - Local Controllers: 3 appointed, 2 developing
 - 5 shifts of IMT management roles trained and on a weekly on-call roster.
 - 99 staff completed CDEM Essentials training.
 - Internal quarterly IMT meetings for all rostered staff.
 - 3 IMT exercises completed (Earthquake/Tsunami, Tornado & Volcanic Ash).
 - 2 BCP exercises completed (active shooter & structural collapse).
 - Internally facing awareness campaigns.

- **Systems**
 - FACT24 Crisis Management system implemented
 - CDC processes documented for 2 sites.
 - Community VHF radio check processes initiated.



- **Equipment**
 - 1 000 sets of bedding & equipment spread across 2 CDC locations (Hastings & Flaxmere).
 - 2 emergency management trailers stocked with 30 sets of bedding & equipment.
 - Deployable HDC Starlink unit stored at the EMO building.
 - Portable HDC VHF Radio & 1 VHF radio in EMO Coms room configured to support community communications.
 - 3 Temporary EOC locations identified
NOTE: These are NOT resilient locations so a dedicated EOC is required



HERETAUNGA HASTINGS

RECOVERY – BUILT ENVIRONMENT

TRANSPORT REBUILD

Goal is to restore the transport network as quickly as possible. Applying an area-wide, bundled approach to the repair of slips, culverts and bridges.

Key Works:

- Sallisbury Road
- Puketapu Bridge
- Matapiro Bridge
- Waikoau Gorge Bridge
- Redclyffe Bridge
- Mangelton Bridge
- Kererū Gorge
- Ellis-Wallace Ford
- Slips: Dartmore, Taihape Rd, Glengary Rd, Puketitiri Rd.

CIP Funding spent: \$23,673,000

NZTA Subsidised work: \$507,000

REBUILDS BRIDGES AND LARGE CULVERTS	BRIDGES REPAIRS	MAJOR SLIP REPAIRS
19 requiring reconstruction	161 bridges that required repairs	224 major slips that required repairs
1 rebuild complete	104 repairs complete	54 repairs complete
3 permanent rebuilds in construction	10 in construction	16 in construction
12 rebuilds in design and planning		

BUILDINGS SUBJECT TO PLACARD (AS OF LATEST)	
Red	39
Y1 & Y2	317
White	450
Demolished	132

Building Recovery

Designated under subpart 6 of the Building Act 2004 as a result of Cyclone Gabrielle remains for 24 suburbs.

RECOVERY – BUILT ENVIRONMENT



Kereru George



Puketapu Bridge



Dartmoor Road Slip



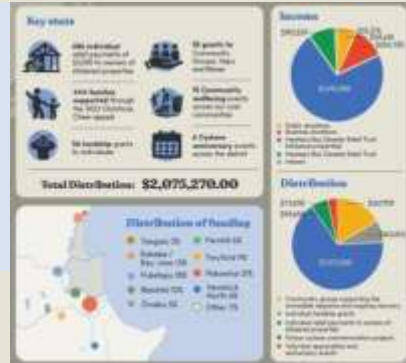
Chrystal Twin Culvert



RECOVERY – SOCIAL/CULTURAL

MAYORAL RELIEF FUND

- 55 grants were made to community groups, hapu and marae.
- 686 individual relief payments of \$2,000 made to owners of stickered properties and 56 additional
- Hardship grants totalling \$163,453 were made directly to individuals.



CIVIC HONOURS AWARDS RECOGNISE COMMUNITY AND CYCLONE EVENTS

This year's Hastings Civic Honours Awards were held in August to recognise 16 individuals and groups in the community who have made a positive difference to the lives of others.



POU AHUREA

- Building trust and strong connections with our Māori communities through supportive Mana Whenua engagement.
- Marae resilience support through Community/Marae hubs.
- Advocating for marae signage and restoration of Aropaoanui river mouth.
- Māori capability funding supporting innovated contract practices & partnership in wāhi taonga review.



Community Engagements

Community Carousel Workshops



Hub Training Sessions



Community Events

**Cape Coast Community Party
at Haumoana School, 9 March 2024**



**Esk Talk The Talk, Walk The Walk Event
at Eskdale School, 19 October 2024**



RESPONSE

EOC ACTIVATION

- 25 – 27 June adverse weather event affecting Haumoana community.
- Local State of Emergency declared
- CDC established at Haumoana School by deploying emergency trailer.
- Early activation, strong IMT leadership, community engagement and constructive collaboration with Police & FENZ contributed to a successful response.



MONITORED EVENTS

- 21 – 24 May adverse weather
- 19 – 20 June CrowdStrike incident.
- 21 December power outage.



Progress since Cyclone Gabrielle

27 January 2025

Thunes Cloete, Executive Director Community Services



Overview of key achievements

Reduction

- Modelling
- Planning

Readiness

- Working with community
- Partnerships and collaboration
- Education and upskilling
- Planning and equipment

Response

Recovery

- WWTP and Awatoto
- Community



Reduction

Updates on hazard research

- Flood Modelling
- Coastal Inundation

Natural Hazards chapter of District Plan

Clifton to Tangoio Coastal Hazard Management Strategy

- Working together with HDC and HBRC



Readiness

Community Emergency Hubs

- 16 CEHs completed by end of 2025

Community Resilience Plans

- 5 CRPs completed by the end of 2025

Sector Engagement

- Disability communities, multicultural communities, older persons' networks, private sector stakeholders

Public Education Campaigns

Training, exercises and workforce capability



Readiness

Plans and processes

- Business Continuity Plans
- Response Plan
- Welfare Plan

Partnerships and collaboration

- Pukemokimoki Marae
- Red Cross, St John, FENZ, Police
- Napier Port and Napier Airport

Equipment and resilience

- New digital radios and Starlink kits
- Generators
- Fibre connection upgrades
- Satellite phones and radios to Duty Controllers & Duty ELT



Response

July 2024: NCC staff to Wairoa as surge staff

December 2024: Response to power outage and heavy rain



Recovery (in addition to RRA reporting)

Wastewater Treatment Plant

- Phases 1 and 2 completed in 2023

Awatoto Industrial Area

- MoU entered into October 2024
- Silt collection site

Category 3 Voluntary Buy-Out

- NCC: 14 Category 3 properties with a dwelling, 13 completed and 1 with a Kaupapa Māori Pathway.

Removal of building placards

- NCC: 128 yellow placards and 4 red placards following cyclone with 19 remaining.

Ongoing community meetings



Emergency Management Update

HBCDEM Joint Committee 27 January 2025



Together we thrive!

Reduction

Hazard Research

- Climate change
- Tsunami Modelling

Risk Reduction

- River management – Pōrangahau flood mitigation
- Urban stormwater management
- Waipawa Water Treatment Plant Relocation



Readiness

Building Community Resilience

- Externally funded
- Community Resilience Plans
- Community Emergency Hubs
- Mobile welfare trailers
- Contingency communications equipment
- Sector engagement
- Mana whenua



Operational Readiness

- Training – CHBDC staff, elected members and community
- Exercise Hau Kaha
- CHBDC Corrective Actions work programme
- Updated plans and processes

Response

CHBDC IMT response from watching brief, to small scale activation

- April 2023 Pōrangahau earthquake
- June 2023 district wide heavy rain event – pre-positioned resources
- January 2024 Waipukurau major water leak – level 4 restrictions
- April 2024, July 2024 IT events – commercial Starlinks since purchased
- May 2024 – weather bomb, boil water notices issued
- October 2024 – weather event
- December 2024 – dry weather event, RAG, FENZ re wildfire risk – CEH’s possible evacuations

Recovery

Sustaining Community Wellbeing

- Externally funded – social sector recovery plan
- Community navigational support
- Rural wellbeing
- Restoration cultural resources
- Community locality plans
- CHB Network of Networks
- Leadership in housing



Recovery - Roothing

- 72 roads closed, 679 landslides and bridge faults \$150m damage
- Response programme completed June 2024 \$45.46m funding from NZTA
 - 4,000 minor repairs to reconnect rural communities
 - Complex repairs 5 bridges, 5 river protection, 2 washouts, 16 landslides
- Now 3 phases
 - #1 \$11m National resilience plan for 4 key sites
 - #2&3 \$18.1m from NZTA to repair further 30 sites across the district



Cyclone Gabrielle Recovery

Joint Committee Update

27 January 2025



14 FEBRUARY
2023

CYCLONE
GABRIELLE

Hawke's Bay Regional Council Recovery

Key achievements – Year 1

- Rapid Rebuild \$70m(32km of 248km stopbank network)
- Silt Recovery Taskforce \$185m(approx. 2.75m cubic tonnes)
- Recovery Team(regional recovery coordination)
- Land Categorisation Process(over 3000 properties assessed)
- Restoration of the telemetry network(43 stations)
- IPMO Scale-up \$300m (Cat 2, IRG Programme, Scheme retrofit)
- Environmental Impact Assessments
- Documenting Regional Recovery

Key achievements – Year 2

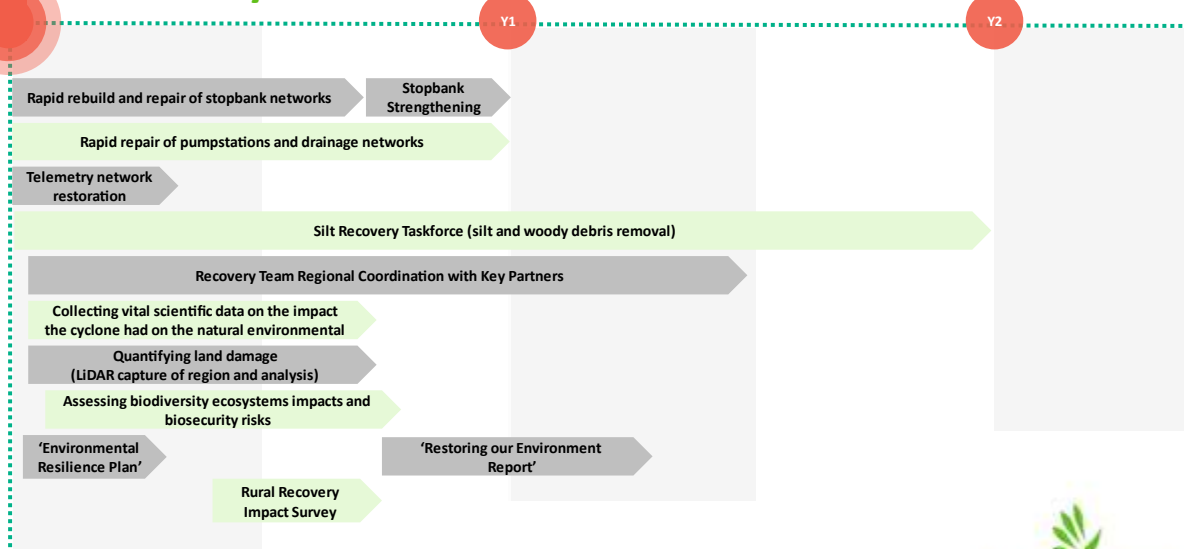
- NIWE Scheme Reviews \$4m (Heretaunga Flood Plains, Upper Tukituki and small schemes)
- NIWE Category 2 Flood Mitigation Programme \$242m (Wairoa, Waiohiki, Omahu, Pakowhai, Whirinaki, Porangahau)
- NIWE Telemetry network resilience \$5m
- Response to Independent Flood Reviews
- Extreme Weather Hub
- Land for Life

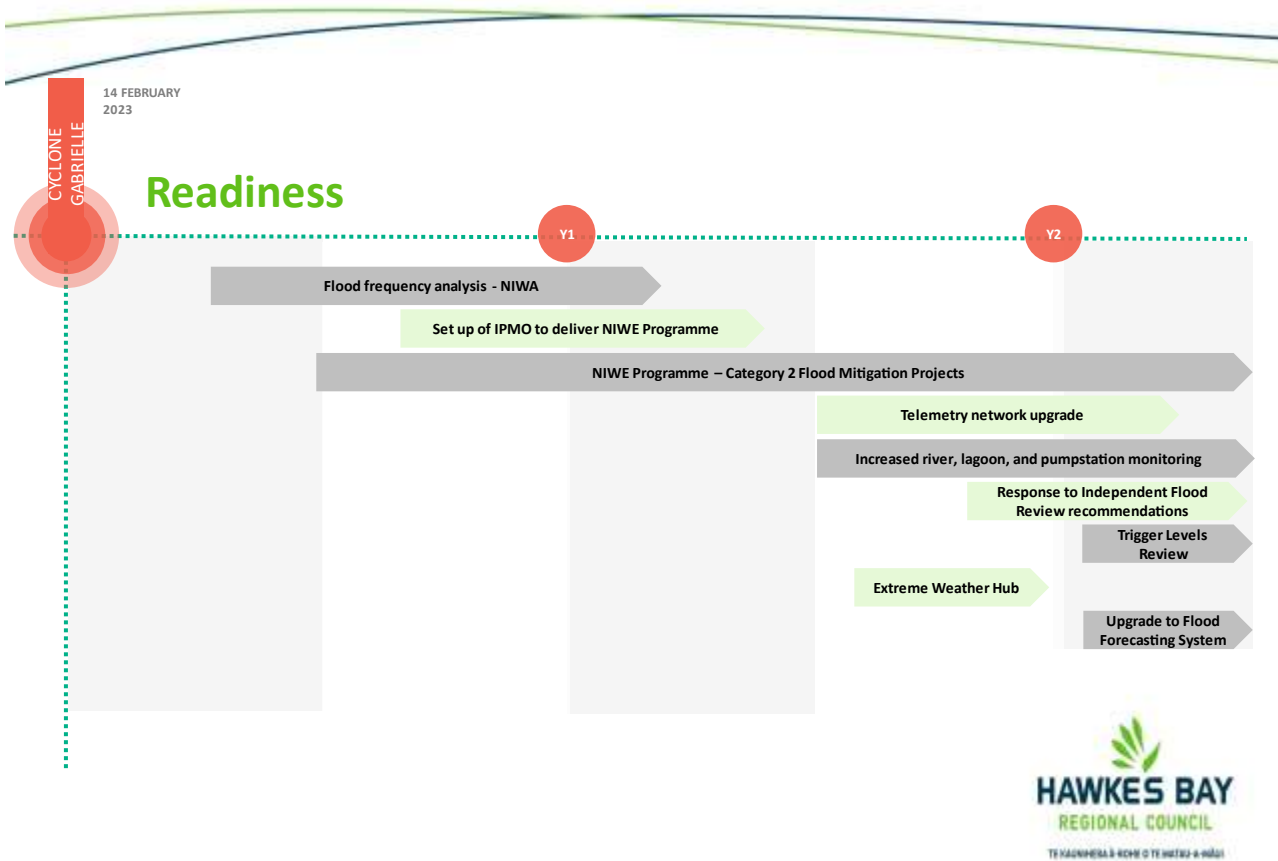
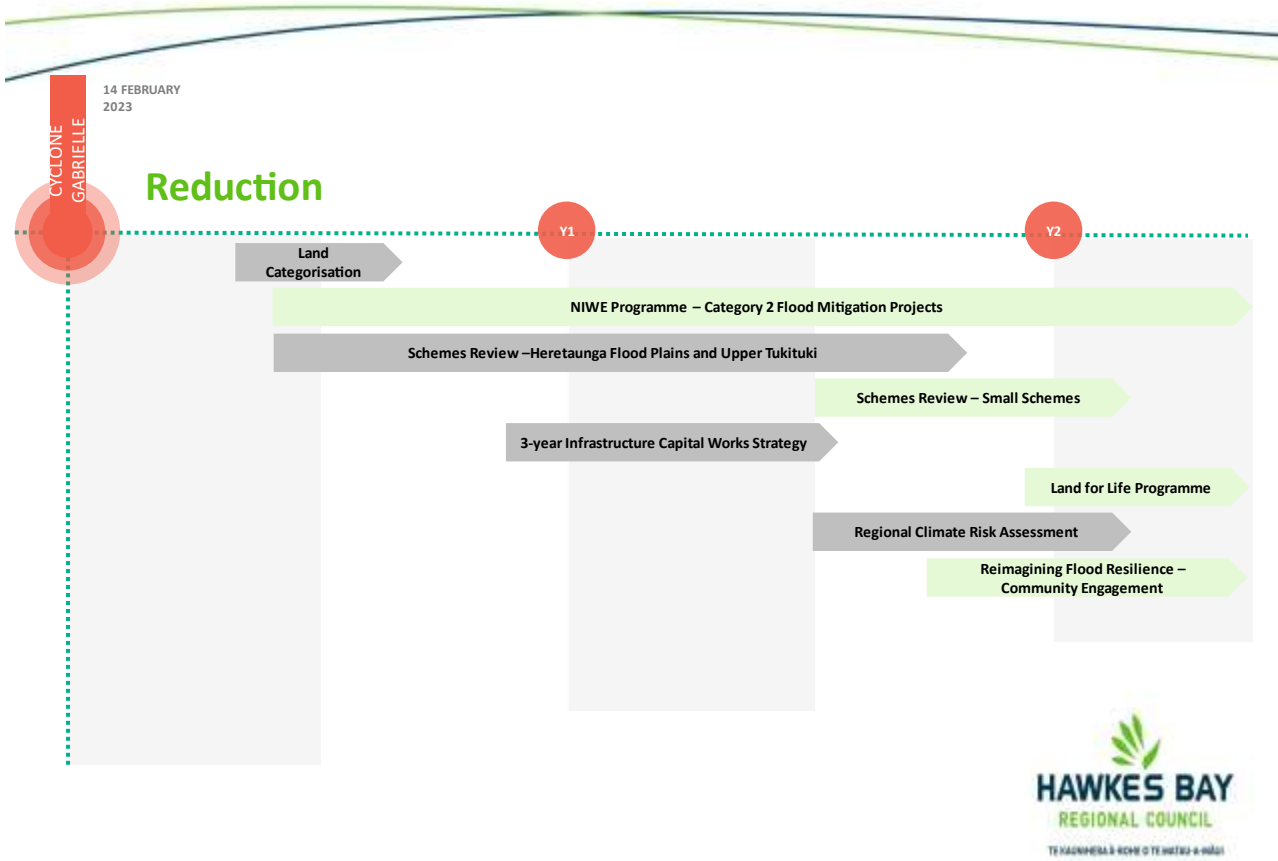


14 FEBRUARY
2023

CYCLONE
GABRIELLE

Recovery





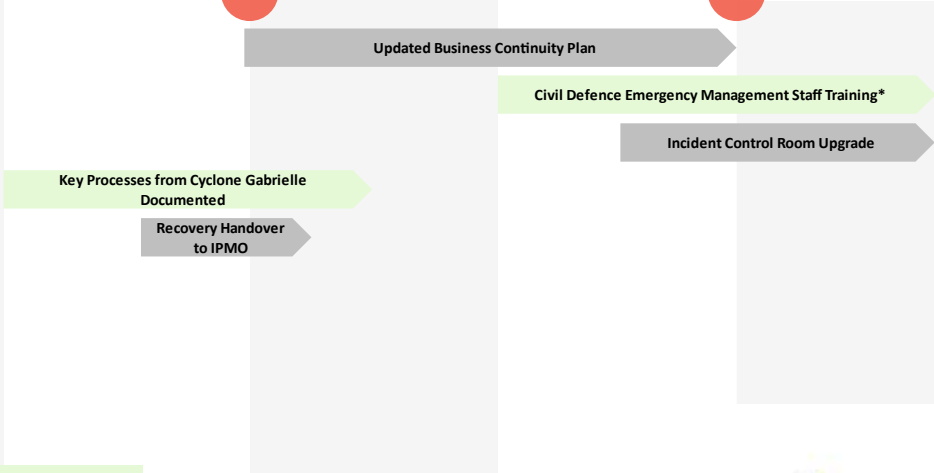
14 FEBRUARY
2023

CYCLONE
GABRIELLE

Response

Y1

Y2



*Staff Training:
129 people attended training courses in 2023 -2024
(109 completed EM Essentials and 20 CIMS 4)



HAWKE'S BAY
REGIONAL
RECOVERY
AGENCY

RECOVERY HIGHLIGHTS

JANUARY 2025



RECOVERY HIGHLIGHTS



Government Funding

- NIWE Hawke’s Bay Crown Funding Agreement negotiated – Crown Funding of:
- \$203.5M for flood protection
- Up to \$252.5M for Transport Rebuild projects
- Up to \$67.5M for Category 3 Voluntary Buyout Programme.
- Additional Crown Funding for Transport – Budget 24, and enhanced Financial Assistance Rates for 2024/25
- Additional Capability Funding granted



RECOVERY HIGHLIGHTS (CONTINUED)

Transport

- Initial reconnection and rebuild projects complete
- Transport Rebuild programme significantly advanced.
- Waikare Gorge realignment in NLTP
- TREC recovery programme advanced.



Redclyffe/Waiohiki temporary bridge rebuild



Waikare Bridge, SH2. Paul Taylor/Hawke's Bay Today



Crystal Culvert



RECOVERY HIGHLIGHTS^(CONTINUED)

Flood Protection (HBRC)

- Rapid Repair Programme Complete
- Order in Council approved for regulatory relief
- Planning and design work advanced
- Waipawa Drinking Water protection (CHBDC)



Category 3 Voluntary Buyout

- Voluntary Buyout programme essentially complete within one year



RECOVERY HIGHLIGHTS^(CONTINUED)

Silt and Debris

- Over \$200M in Government funding for silt and debris clearance
- Over 4.6M tonnes of silt and debris removed
- 7,000ha of productive land restored to productive use.
- Rural land Order in Council approved.



RECOVERY HIGHLIGHTS_(CONTINUED)

Other

- Category 3 Kaupapa Māori negotiations advanced (Petane and Maungaharuru Tangitū)
- Temporary Housing solutions delivery (NKII, PSGEs, TAS)
- Whānau and community support delivery (Regional Public Service)
- Business sector support programmes delivered
- Recovery Plans 1 and 2.0 completed.



Tangoio Marae



EMERGENCY SERVICES





Multi-Agency responses

- Regional Operational Support Strategy: Expanding community support to include data capture, assistance with establishing Welfare Centres, IMT Logistics Function support, alongside other activities such as road and traffic control and community support.

People Capability

- Provide trained volunteers to assist in setting up and managing community hubs.
- Establish a swift water rescue team in the Hawke's Bay region.

Operating models

- Divisions Project completed and adopted by Emergency Services

Business Continuity

- Manage and maintain vital equipment storage and operation, including generators, Starlinks, computers, and radios.
- Upgrade and improve the Local Coordination Centre, which served as the operational base during Cyclone Gabrielle.
- Develop and implement a Property Generator Strategy to ensure resilience during emergencies.



Multi-Agency responses

- The development and implementation of "Reassurance Group Policing" to support and engage with vulnerable and rural communities in the 12–18 months following the cyclone has significantly enhanced rural engagement and strengthened networks with rural hubs.

People Capability

- Hawke's Bay Police Family Liaison Officer (FLO) Team implemented and fully trained, with associated training completed.

- Command and Control training for district leadership developed and planned for rollout in 2025.
- Command and Control/CIMS 4 training integrated into Leader Manager courses to enhance leadership capabilities.
- Major Operations Centre national workforce established and provided with comprehensive training.
- Multi-agency exercise in Command and Emergency Management conducted in 2024 as part of the Ru Whenua Exercise.



Operating models

- The missing person reconciliation process was further developed and successfully tested during the national Ru Whenua exercise and regional SAR exercise.
- The Family Liaison Officer Network has been further developed, with policies, processes, and training successfully implemented.



Business Continuity

- Installation of secondary generators at St John stations in the Hawke's Bay Region.
- Implementation of resilience kits, including a three-day food supply, for St John response vehicles.
- Development of 4WD response options and enhanced capability.